



# Laboratory: Computer Aided Engineering

Department of Mechanical and Energy Engineering

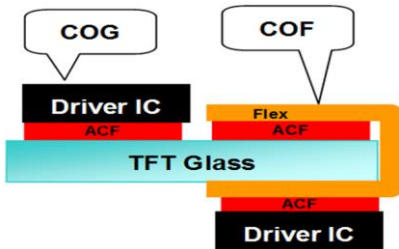
Advisor: 林肇民 教授 Professor Chao-Ming Lin, PhD.

Teaching Courses: : Materials, Mechanics, Mechanical Design, CAE

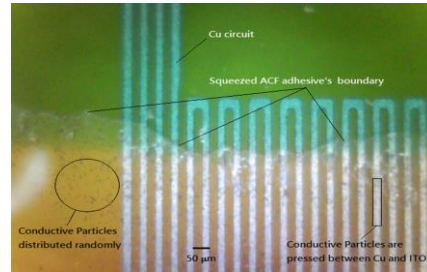
Research Interests: Mold Design, Polymer Processing, Biomedical Engineering

Contact Information:

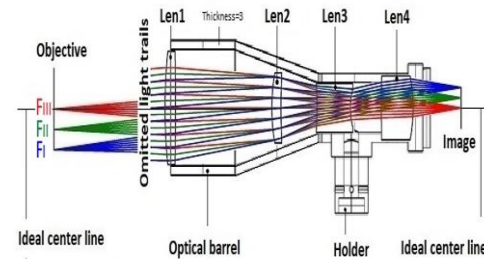
Office No.: A10202; Tel.:+886-5-2717563; Fax: +886-5-2717561; E-mail: cmlin@mail.ncyu.edu.tw



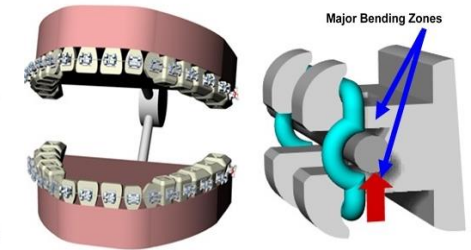
ACF: Bonding Processing



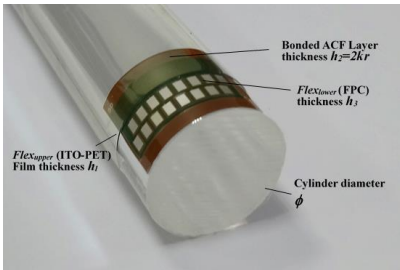
ACF: FOF Microscope image



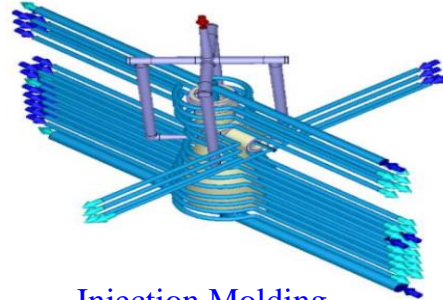
Optical Lens Design & Analysis



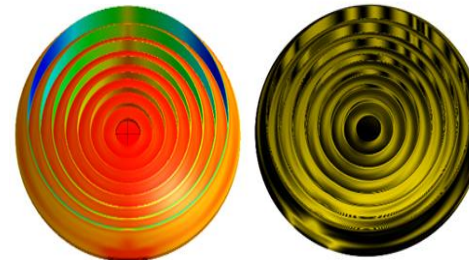
MIM: Orthodontic Braces



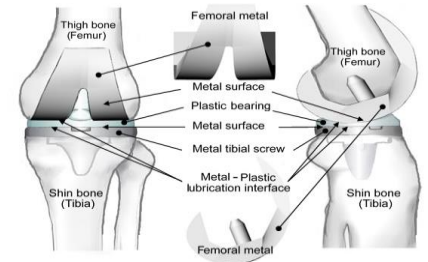
ACF: Flex-On-Flex Bonding



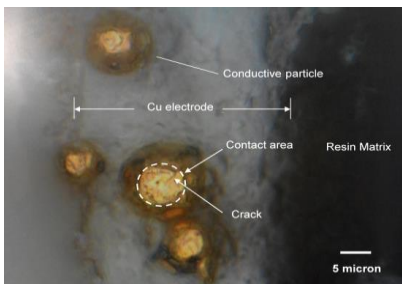
Injection Molding



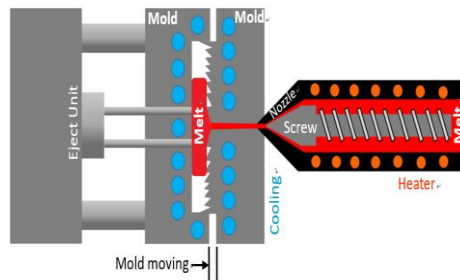
IM / ICM: Fresnel Lens



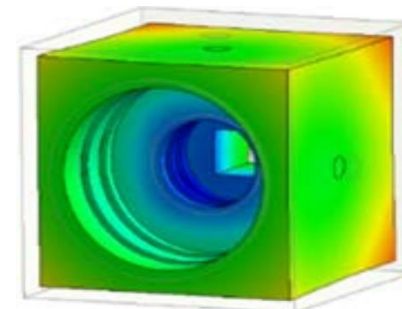
MIM: artificial knee joints



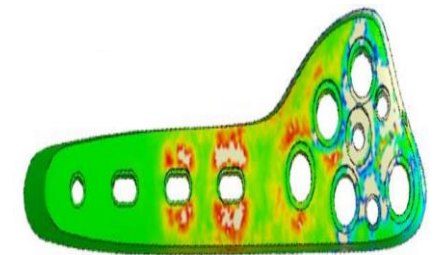
ACF: Particles & Matrix



Injection Compression Molding



Optical Frame: Design & Analysis



MIM: Bone Plate