

# Laboratory: Energy Saving Lab.



**Department of Mechanical and Energy Engineering**

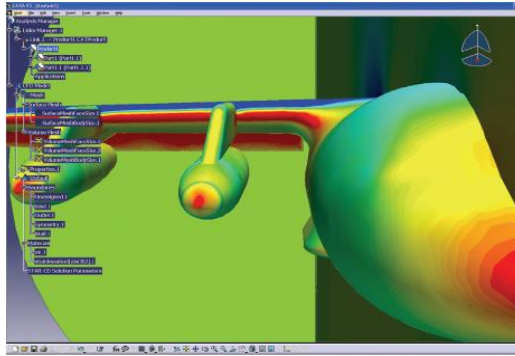
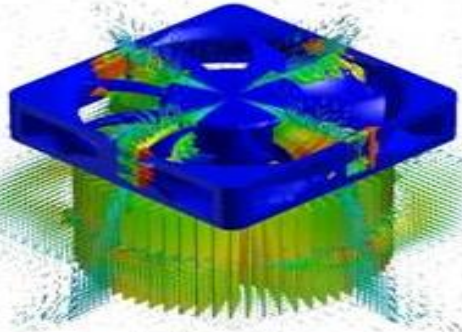
**Advisor:** 張炯堡 教授 Professor **Tong-Bou Chang, PhD.**

**Teaching Courses:** Heat Transfer, Refrigeration & Air Conditioning, Heat Exchanger

**Research Interests:** Energy Saving, Air Conditioning Design, Indoor Quality

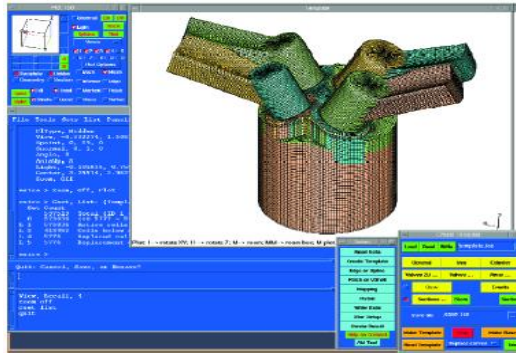
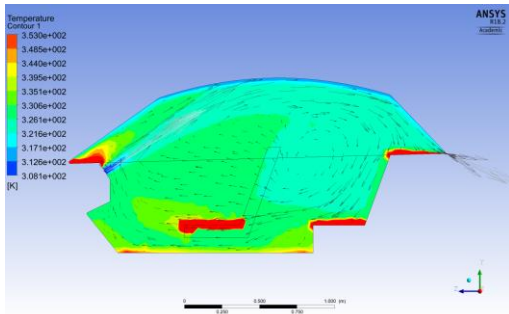
**Contact Information:**

Office No.: A10-223; Tel.:+886-5-2717565; Fax: +886-5-2717561; E-mail: [tbchang@mail.ncyu.edu.tw](mailto:tbchang@mail.ncyu.edu.tw)



## AM-101 thermal comfort meter

It is used to test the thermal comfort of personnel in the environment to evaluate the hazards of its working environment, measure the PMV-PPD value within the defined range of temperature, humidity and wind speed, and provide technical support for test data for formulating reasonable cooling technical specifications.



## CFD simulation software

Fluent is a powerful general-purpose computational fluid dynamics software. It uses unstructured grid generation technology and finite volume method to study the fluid analysis package software of complex flows in the industrial field. It can model most of the typical physical phenomena. Analysis can be applied to fluid analysis in many other fields such as industrial manufacturing, chemical reaction, automobile power, structural optimization design, etc.



## Air Quality Monitor

Provide various air information such as temperature, humidity, carbon dioxide concentration, etc., can grasp the indoor air condition, make immediate improvements, and create a good indoor environment.

