

海外留學經驗 與美國研究分享

林建達

Jian-Da Lin

New Jersey Medical School

Rutgers, The State University of New Jersey

NYU School of Medicine

NYU Langone Medical Center

Alexandria Center for Life Science

出國念書前經歷

- 2001-2005 嘉義大學食品科學系
- 2005-2007 成功大學微免所
- 2007-2008 海軍總部當兵
- 2009-2010 國家衛生研究院癌研所 研究助理

為什麼要出國念書?留學動機?

- 碩士? 博士?
- 語文學習?
- 學習專業? MBA etc.
- 體驗不同文化?
- 拿學歷?
- 今天如果你有8萬塊美金?
 - 創業?
 - 出國念碩士?



到哪個國家念書?



The World



England



Germany



France



Italy



Korea



Japan



Thailand



Vietnam



Canada



America



Mexico



Peru



Argentina



Brazil



Egypt



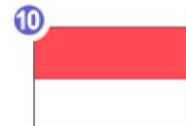
South Africa



Australia



New Zealand



Indonesia



Singapore

• 學費? 經濟考量?

• 氣候考量?

• 專業環境考量?

• 朋友、種族、生活圈考量?

• 大學排名考量 (U.S. news ranking)



出國唸書方式與經濟來源

- 遊學
- 交換學生
- 條件式入學(先上當地語文學校)
- 自費留學
- 公費留學
- 國外學校獎學金



出國唸書經濟來源

留學花費排行榜

排名	國家	大學學費 (1年/美元)	生活費 (1年/美元)	總支出 (1年/美元)
1.	 澳洲	24081	+ 18012	= 42093
2.	 新加坡	18937	+ 20292	= 39229
3.	 美國	24914	+ 11651	= 36564
4.	 英國	21365	+ 13680	= 35045
5.	 香港	13444	+ 18696	= 32140
6.	 加拿大	16746	+ 13201	= 29947

註/以總支出排名

資料來源/匯豐銀行

製表/孫中英

■ 聯合報

學習專業？畢業後在美國工作？定居美國？

- 電腦科學&統計
- 美國工作簽證??!!
- 美國工作幾年後回台灣比較吃香？
- 是否能接受美國與台灣的工作環境差異？



國外念書挑戰

- 剛開始語言能力?
- 種族歧視?
- 獨立生活大小事! 寂寞感!
- 上課發言?
- 邏輯思考 & 語言文法!



生醫領域博士好處

- 免申請費用。
- 全額獎學金(Full Scholarship):
 - 免學費 (Tuition exempts).
 - 學校支付醫療保險(Full health insurance).
 - 生活費: \$25000-\$30000 for housing and live expense.



學校選擇

- [維基百科](#) 之排名資訊
- U.S. News Medical school ranking.
- 美國公立大學之一般類型
 - 重點學校(University of 州名, 州名 State University)
 - 區域性教學型大學(地點+州名 State University)
 - 社區大學(community college)

尋找適合自己的博士學程

PhDs.org

The Top PhD Resource on the Web

PROGRAM RANKINGS

RESOURCES

ABOUT US

Home

Find the Graduate School That's Right for You

Welcome to PhDs.org!

We created profiles of over 4900 doctoral programs across 59 fields to help you evaluate and decide on a school to attend.

Our site breaks down into three sections:

Rankings: We allow students to rank programs based on their own preferences. Students can select from over 20 department characteristics, weigh them individually, and we'll then generate a unique ranking report for you. All of the available data is based from the National Research Council's most recent assessment of doctoral programs. Beyond our custom rankings, we also present the NRC's rankings for the same programs, which acts as a useful reference.

Accurate program data: We compiled all the major government sources of data and every possible data point for each program. This includes expenses, student outcomes, department resources, published output, and cohort demographics. In addition to rankings, this data should help you pick a program.

Resources for students: We handpicked the most useful articles published around the internet that offers advice for graduate students. These are organized in sections ranging from career advice to postdoctoral life.

To learn more about the data sources we used and how to navigate through the NRC's doctoral assessment.

Data Sources

Integrated Postsecondary Education Data System

IPEDS is an annual, comprehensive set of surveys of all colleges and universities in the United States. The surveys are conducted by the National Center for Education Statistics.

National Research Council

The National Research Council conducts periodic assessments of doctoral programs in the United States. Our data comes from the most recent assessment in 2010.

Survey of Earned Doctorates

The NSF/NIH/NEH/USED/USDA/NASA Survey of Earned Doctorates is an annual survey of all new recipients of doctorates from US universities at graduation. The average of the response rates for the 2000-2004 surveys was 92%.

尋找適合自己的博士學程

Rank PhD Programs

Agricultural Sciences

+

Arts and Humanities

+

Communication

+

Engineering

+

Health Sciences

+

Life Sciences

+

Physical Sciences and Mathematics

+

Social and Behavioral Sciences

+

PhDs.org

PhDs.org copyright © 1997-2016. All rights reserved.

一般學校要求

- GRE: 1300 above
- TOEFL: 80 above
- 2 pages SOP
- Top 20 medical school need publications.

申請流程

- 一般申請建議6~12個月前開始準備

4月前
sign
offer

12月中前

1月-2月



New York

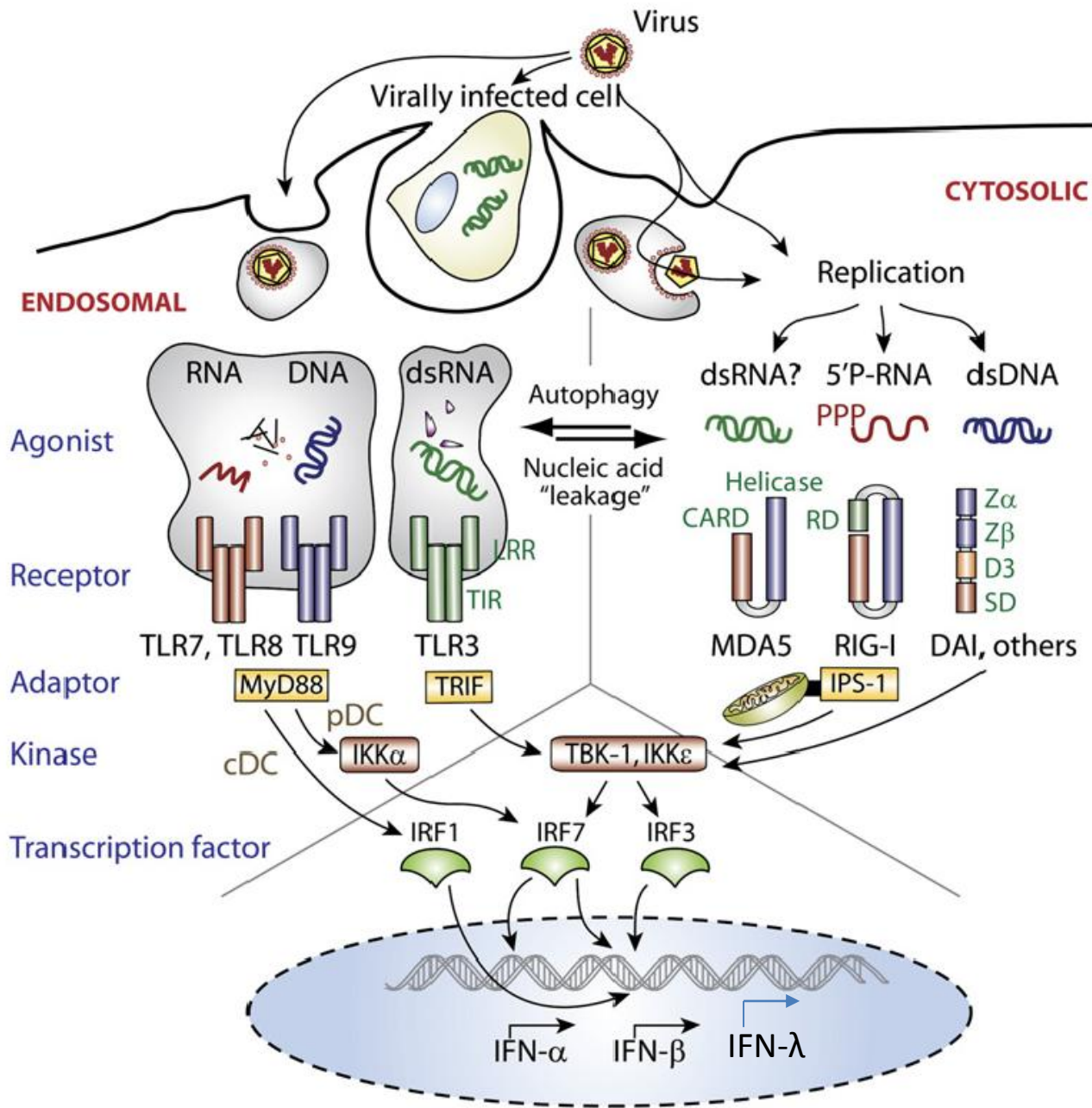


New York

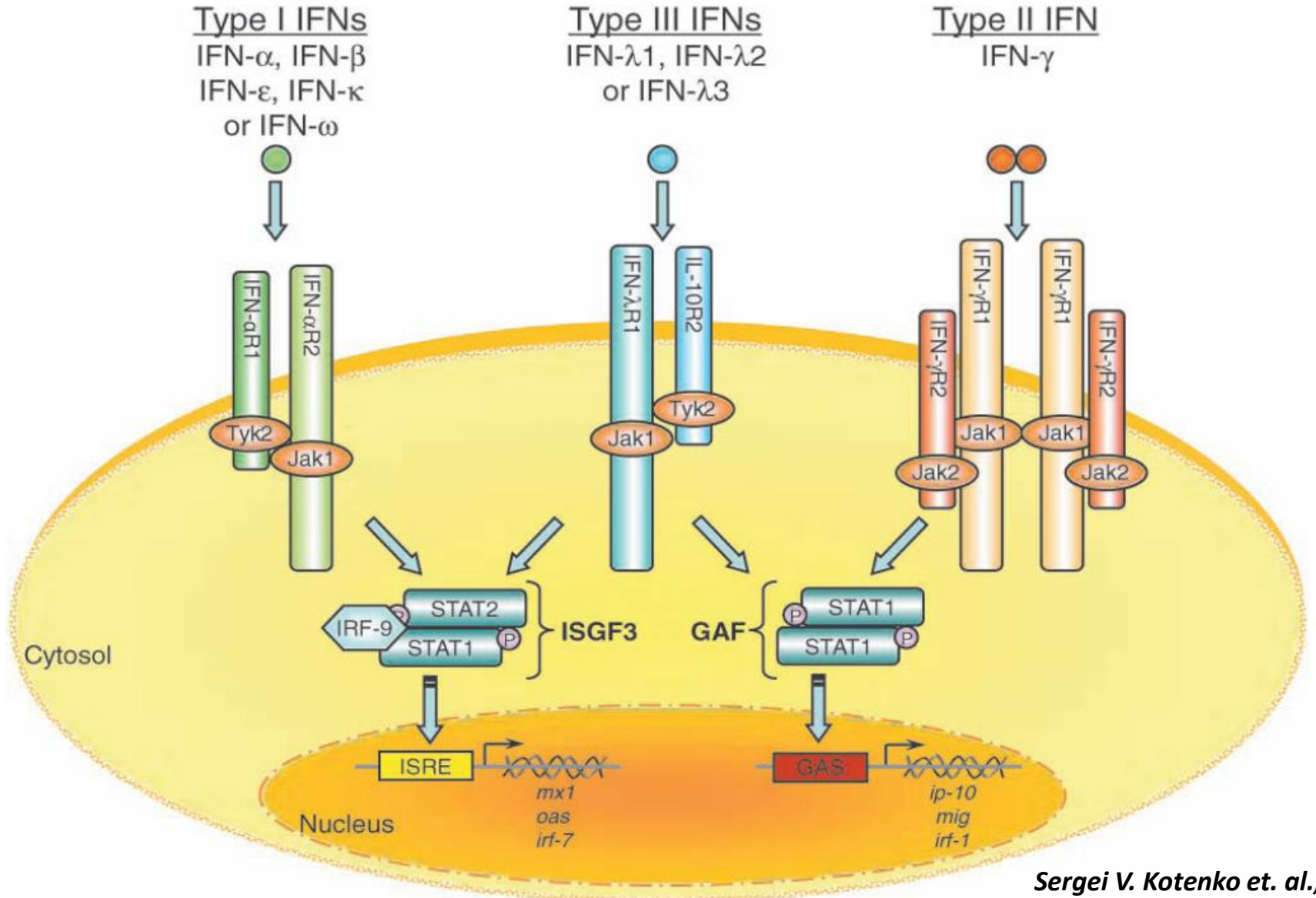


Role of Interferon- λ in Intestinal Immunity to Virus Infection

IFN production in response to virus infection

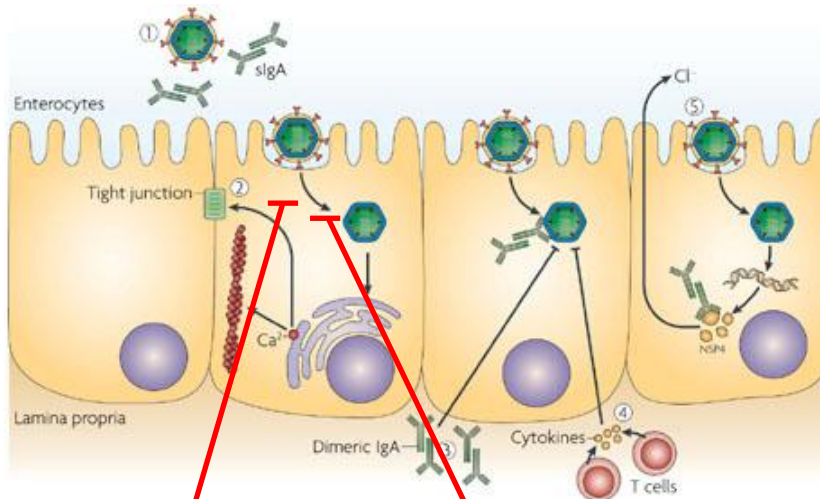


IFN receptors, signaling, and antiviral genes



Role of type I and type III IFNs in intestinal antiviral immunity

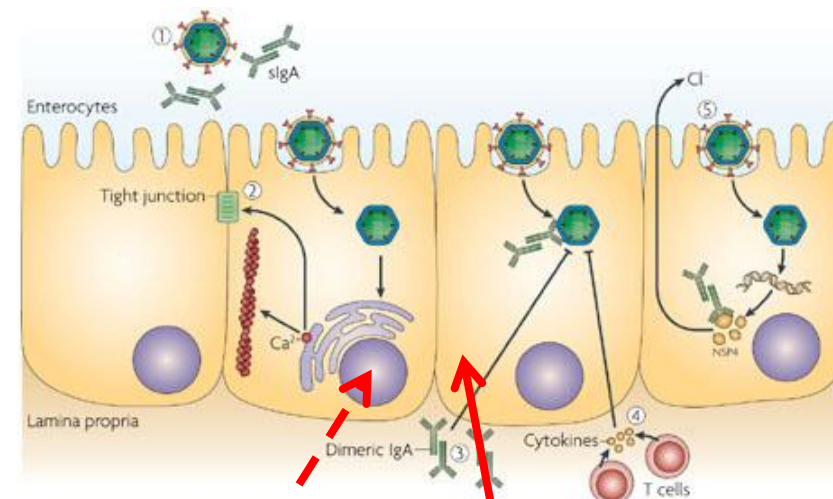
Neonate:



Type I IFNs

Type III IFNs

Adult:



Type I IFNs

Type III IFNs

Acknowledgements

- **Kotenko's lab**

- Sergei V. Kotenko, Ph.D.
- Sergey V. Smirnov, Ph.D.
- Wen-I Tsou, Ph.D.
- Connie McElrath
- Jianya Peng,
- Murugabaskar Balan, Ph.D.
- Raghavendr Sridhar
- Satya Singh

- **Thesis readers and advisory committee**

- Amariliz Rivera-Medina, Ph.D.
- Jerome A. Langer, Ph.D.
- Mark C. Siracusa, Ph.D.
- George S. Yap, Ph.D.

- **Durbin's lab**

- Joan Durbin, M.D., Ph.D.
- Russell Durbin, Ph.D.
- Marvin Sandoval
- Hsiang-Chi Tseng
- Heidi Risman

- **Image Core Facility**

- Luke Fritzky, M.S.
- Joel Pierre



- **Greenberg's lab**

- Harry B. Greenberg, M.D.
- Ningguo Feng, Ph.D.
- Adrish Sen, Ph.D.

- **Department Pathology**

- Muriel W. Lambert, Ph.D.
- Elizabeth S. Raveche, Ph.D.
- Patricia Fitzgerald-Bocarsly, Ph.D.
- Frederick D. Coffman, Ph.D.

An aerial photograph of the New York City skyline at sunset. The sky is filled with golden, dramatic clouds, and the sun is low on the horizon, casting a warm glow over the city. The Empire State Building is the central focus, standing tall among other skyscrapers. The water of the harbor is visible in the distance.

Q & A

Email: linjianda@gmail.com